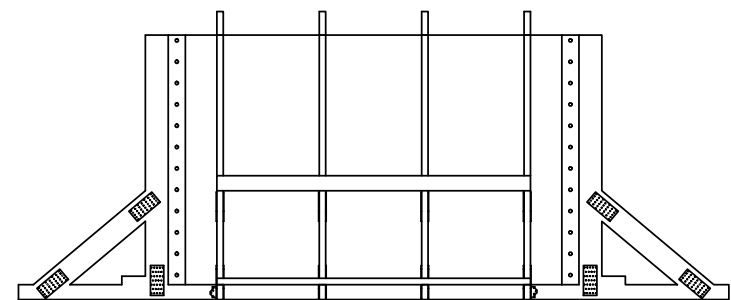
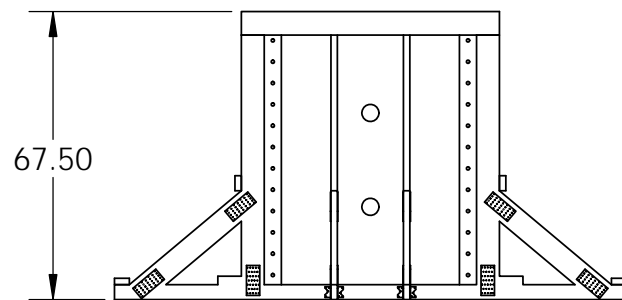


L-BRACKET 58.5" LONG (X4)



PROPRIETARY AND CONFIDENTIAL

THE INFORMATION CONTAINED IN THIS DRAWING IS THE SOLE PROPERTY OF UNIVERSITY OF IDAHO, ME DEPARTMENT. ANY REPRODUCTION IN PART OR AS A WHOLE WITHOUT THE WRITTEN PERMISSION OF UNIVERSITY OF IDAHO, ME DEPARTMENT IS PROHIBITED.

DIMENSIONS ARE IN INCHES
THIRD ANGLE PROJECTION

SOLAR ROCKS

MATERIAL: VARIES

DEFAULT TOLERANCES:

LINEAR:
X. ± .25
X.X ± .1
X.XX ± .01
X.XXX ± .002

ANGULAR:
X. ± 2
X.X ± 1
X.XX ± 0.30°

DESCRIPTION: COMPLETE CHAMBER ASSEMBLY

CHECKED BY: XXXXXXXXXX

DATE: XX/XX/XX

DRAWN BY: JAKOB HEMPHILL

DATE: 2/25/2019

FILE NAME: (0-00) Full assembly.SLDPRT

**UNIVERSITY OF IDAHO
ME DEPARTMENT**

PART #: 0-00

QTY: 1

SCALE: 1:45

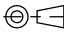
SHEET: 1 OF 15

ITEM NO.	PART NUMBER	DESCRIPTION	QTY.
1	1-00	Inner cement lining assembly	1
2	2-00	Outer plywood structure assembly	1
4	3-00	Support structure assembly	1
5	4-00	Roofing structure assembly	1

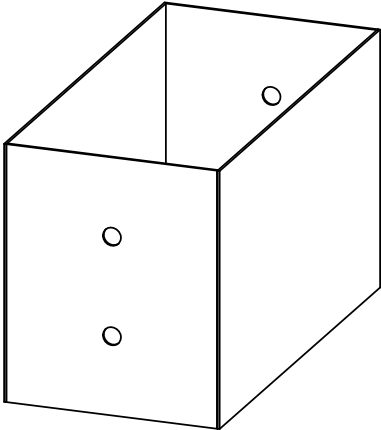
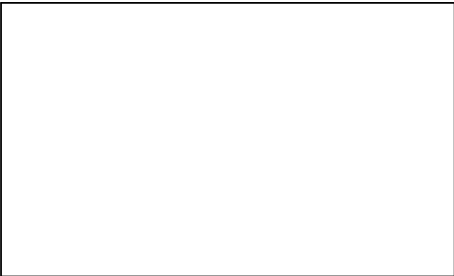
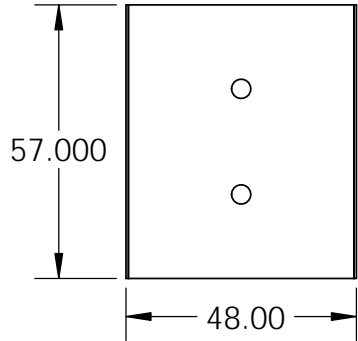
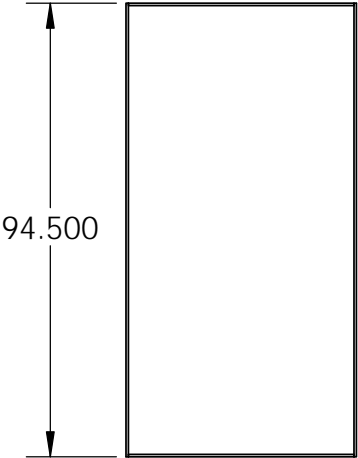
TOTAL PURCHASE LIST					
PART NO:	SUB-ASSEMBLY NO:	DESCRIPTION	PRICE PER UNIT	UNITS	TOTAL
001	1-00,4-00	CEMENT SHEETS (3'x5'x1/2")	12.49	14	174.86
002	2-00,4-00	CDX PLYWOOD SHEETS (4'x8'x3/4")	26.12	8	208.96
003	3-00	NO:2 2"X4"X10' BOARDS	3.52	7	24.64
004	3-00	NO:2 2"X4"X12' BOARDS	4.22	2	8.44
005	3-00	NO:2 2"X4"X14' BOARDS	4.82	2	9.64
006	3-00	NO:2 2"X6"X8' BOARDS	4.06	6	24.36
007	3-00	NO:2 2"X6"X10' BOARDS	5.07	9	45.63
008	0-00	L-BRACKETS 58.50" LONG	---	4	0
009	3-00	3-1/8"X7" TIE PLATE	1.16	73	84.68
010	3-00	Z-MAX FRAMING ANGLE	0.80	33	26.4
			TOTAL COST:		607.61

NOTE: DUE TO WIDE VARIETY OF QUANTITY, PRICE, AND PREFERENCE, FASTENERS SUCH AS NAILS AND SCREWS ARE NOT INCLUDED IN THIS PURCHASE LIST. PLEASE MAKE APPLICABLE CALCULATIONS TO DETERMINE QUANTITY AND TYPE OF FASTENERS DESIRED.

NOTE: TOTAL PURCHASE LIST CONTAINS EXTRA MATIERIAL IN CASE OF ERROR.

PROPRIETARY AND CONFIDENTIAL THE INFORMATION CONTAINED IN THIS DRAWING IS THE SOLE PROPERTY OF UNIVERSITY OF IDAHO, ME DEPARTMENT. ANY REPRODUCTION IN PART OR AS A WHOLE WITHOUT THE WRITTEN PERMISSION OF UNIVERSITY OF IDAHO, ME DEPARTMENT IS PROHIBITED.		DIMENSIONS ARE IN INCHES THIRD ANGLE PROJECTION 		SOLAR ROCKS	
MATERIAL: N/A					
DEFAULT TOLERANCES: LINEAR: X.±.25 X.X±.1 X.XX±.01 X.XXX±.002		DESCRIPTION: PARTS LIST CHECKED BY: XXXXXXXXXX DATE: XX/XX/XX		UNIVERSITY OF IDAHO ME DEPARTMENT	
ANGULAR: X.±.2 X.X±.1 X.XX±.0.30'		DRAWN BY: JAKOB HEMPHILL DATE: 2/25/2019		PART #:	0-00
FILE NAME: (0-00) Full assembly.SLDPR		SCALE: 1:45		QTY:	N/A
				SHEET: 2 OF 15	

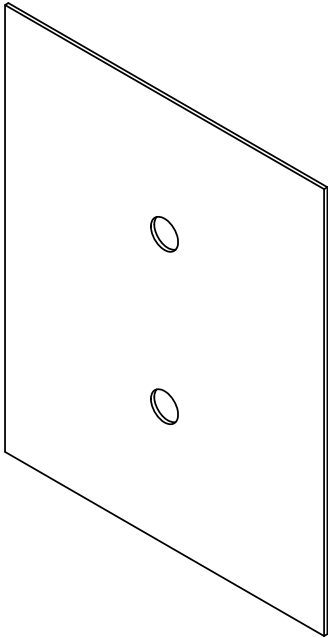
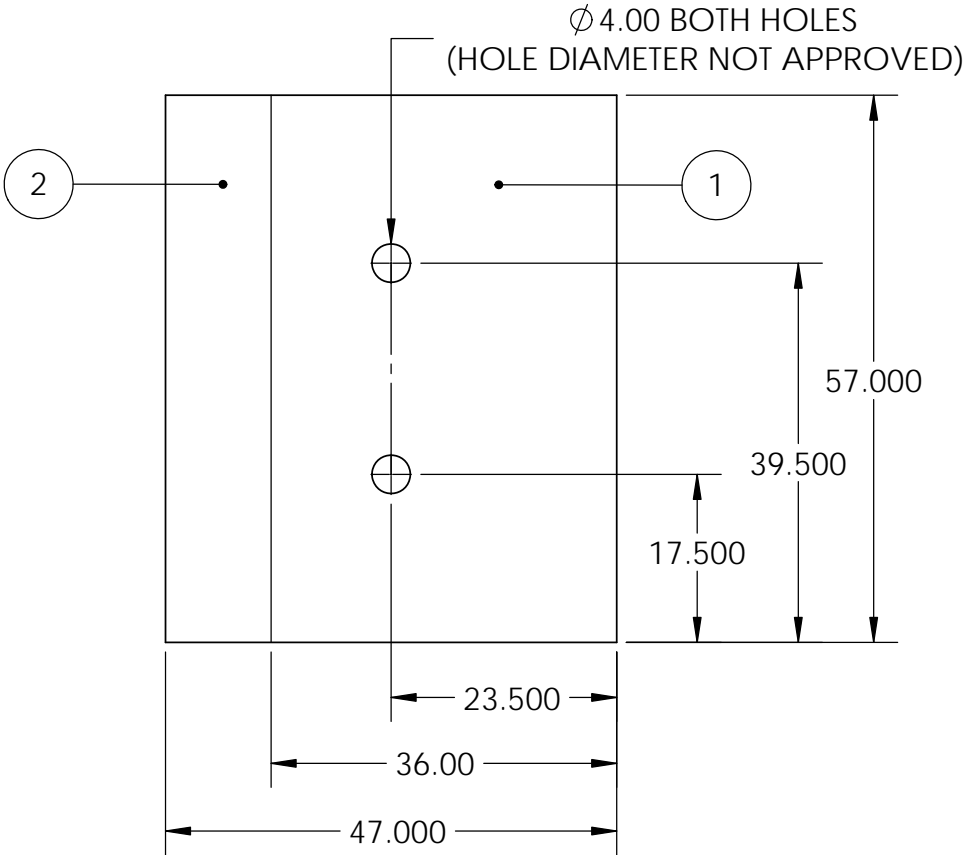
ITEM NO.	PART NUMBER	DESCRIPTION	QTY.
1	1-01	cement board ends	2
2	1-02	cement board sides	2
3	1-03	cement board bottom	1




<div>PROPRIETARY AND CONFIDENTIAL</div> <div>THE INFORMATION CONTAINED IN THIS DRAWING IS THE SOLE PROPERTY OF UNIVERSITY OF IDAHO, ME DEPARTMENT. ANY REPRODUCTION IN PART OR AS A WHOLE WITHOUT THE WRITTEN PERMISSION OF UNIVERSITY OF IDAHO, ME DEPARTMENT IS PROHIBITED.</div>		<div>DIMENSIONS ARE IN INCHES</div> <div>THIRD ANGLE PROJECTION</div> <div></div>		<div>SOLAR ROCKS</div>	
		MATERIAL: CEMENT WALL BOARD			
DEFAULT TOLERANCES:		DESCRIPTION: INNER CEMENT INSULATION ASSEMBLY		UNIVERSITY OF IDAHO ME DEPARTMENT	
LINEAR: X.±.25 X.X±.1 X.XX±.01 X.XXX±.002	ANGULAR: X.±2 X.X±1 X.XX±0.30'	CHECKED BY: XXXXXXXXXXXX	DATE: XX/XX/XX		
		DRAWN BY: JAKOB HEMPHILL	DATE: 2/25/2019	PART #: 1-00	QTY: 1
		FILE NAME: (0-00) Full assembly.SLDPRT		SCALE: 1:40	SHEET: 3 OF 15

ITEM NO.	PART NUMBER	DESCRIPTION	QTY.
1	001	cement board (3'X5'X1/2")	2

NOTE: BALOONS INDICATE THE BOARDS USED AND THE TOTAL NUMBER OF BOARDS .

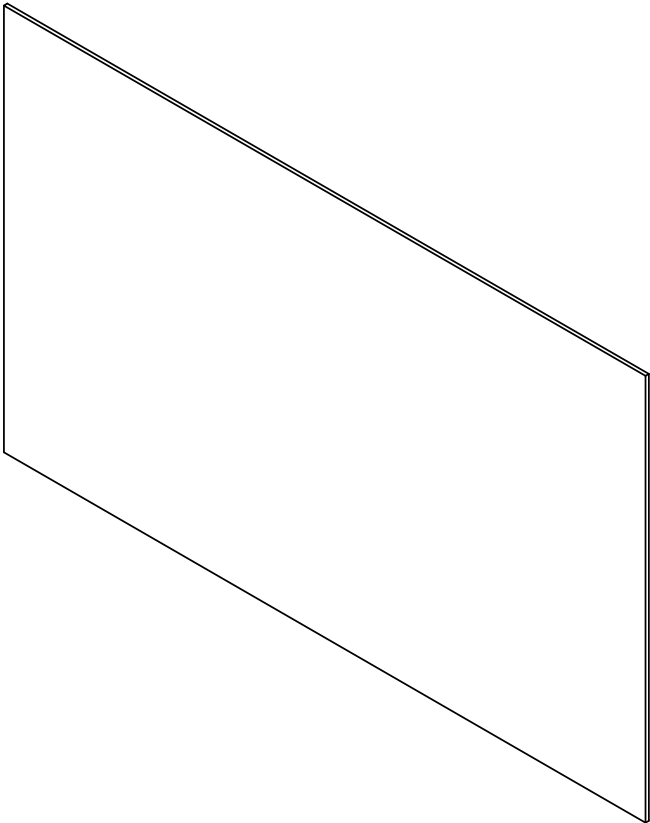
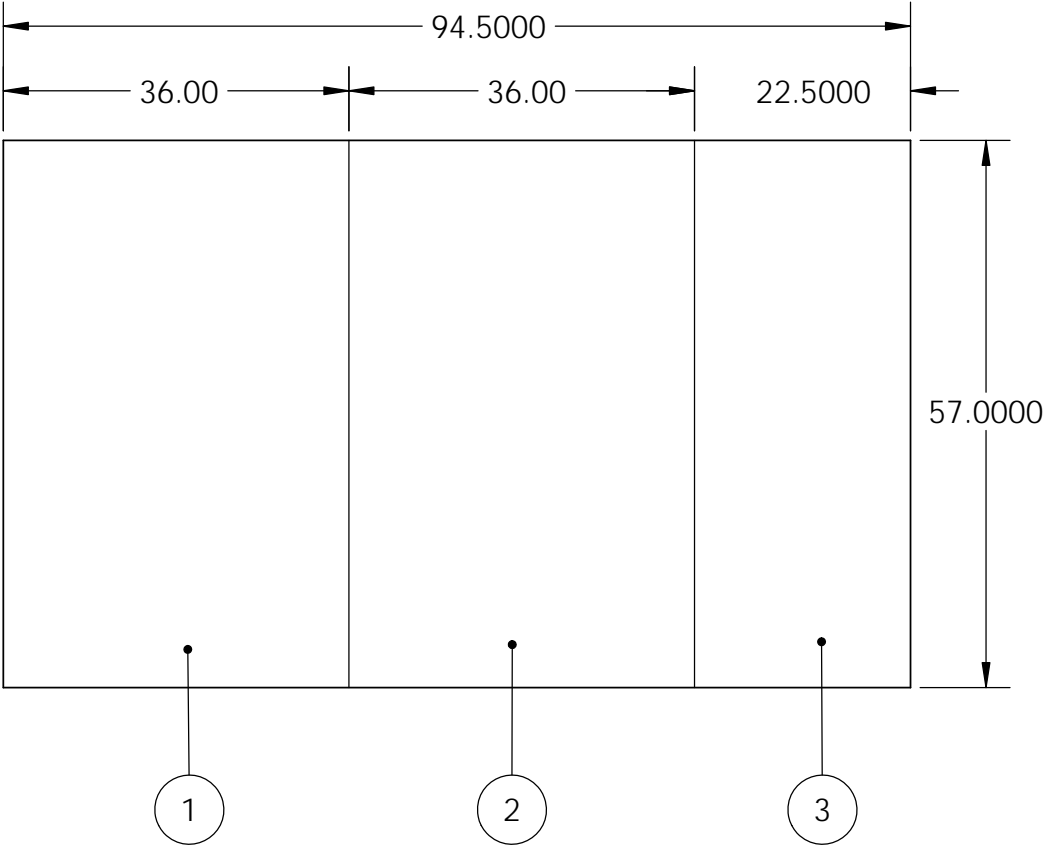


FOR CONSTRUCTION: TAKE TWO CEMENT BOARDS, CUT TO SIZE THEN DRILL PIPING HOLE IN CENTER. ATTACH EACH BAORD TO CORRECT LOCATION ON PLYWOOD BACKING.

<div>PROPRIETARY AND CONFIDENTIAL</div> <div>THE INFORMATION CONTAINED IN THIS DRAWING IS THE SOLE PROPERTY OF UNIVERSITY OF IDAHO, ME DEPARTMENT. ANY REPRODUCTION IN PART OR AS A WHOLE WITHOUT THE WRITTEN PERMISSION OF UNIVERSITY OF IDAHO, ME DEPARTMENT IS PROHIBITED.</div>		<div>DIMENSIONS ARE IN INCHES</div> <div>THIRD ANGLE PROJECTION</div> <div></div>		<div>SOLAR ROCKS</div>	
		MATERIAL: CEMENT BOARD			
DEFAULT TOLERANCES:		DESCRIPTION: INNER CEMENT INSULATION ENDS		<div>UNIVERSITY OF IDAHO</div> <div>ME DEPARTMENT</div>	
LINEAR: X.±.25 X.X±.1 X.XX±.01 X.XXX±.002		CHECKED BY: XXXXXXXXXX DATE: XX/XX/XX DRAWN BY: JAKOB HEMPHILL DATE: 2/25/2019 FILE NAME: (0-00) Full assembly.SLDPRT			
ANGULAR: X.±2 X.X±1 X.XX±0.30'				PART #: 1-01	QTY: 2
				SCALE: 1:20	SHEET: 4 OF 15

ITEM NO.	PART NUMBER	DESCRIPTION	QTY.
1	001	cement board (3'X5'X1/2")	2(1)

NOTE: BALOONS INDICATE THE BOARDS USED AND THE TOTAL NUMBER OF BOARDS.
 NUMBERS IN PARENTHESIS INDICATE MATERIAL USED FROM SPARE MATERIAL.

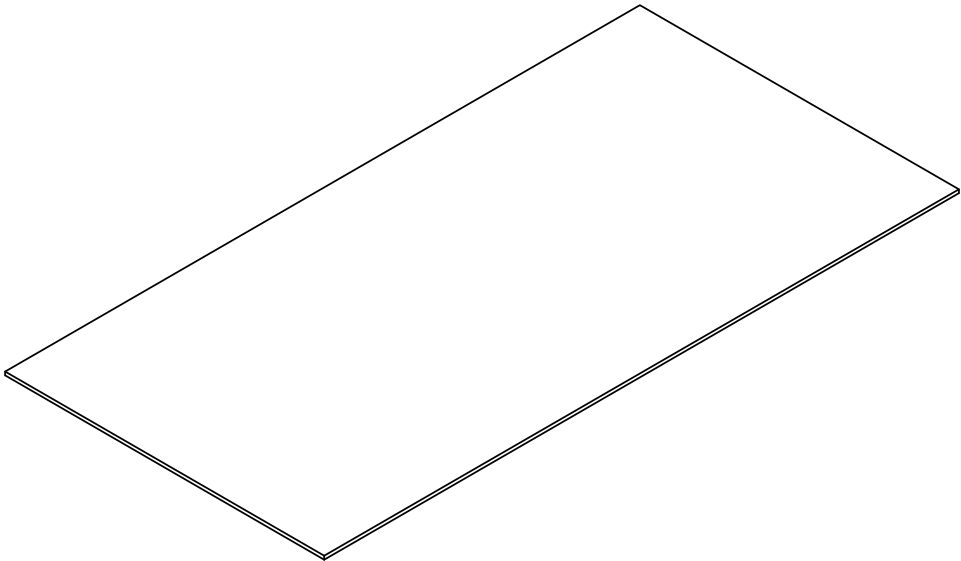
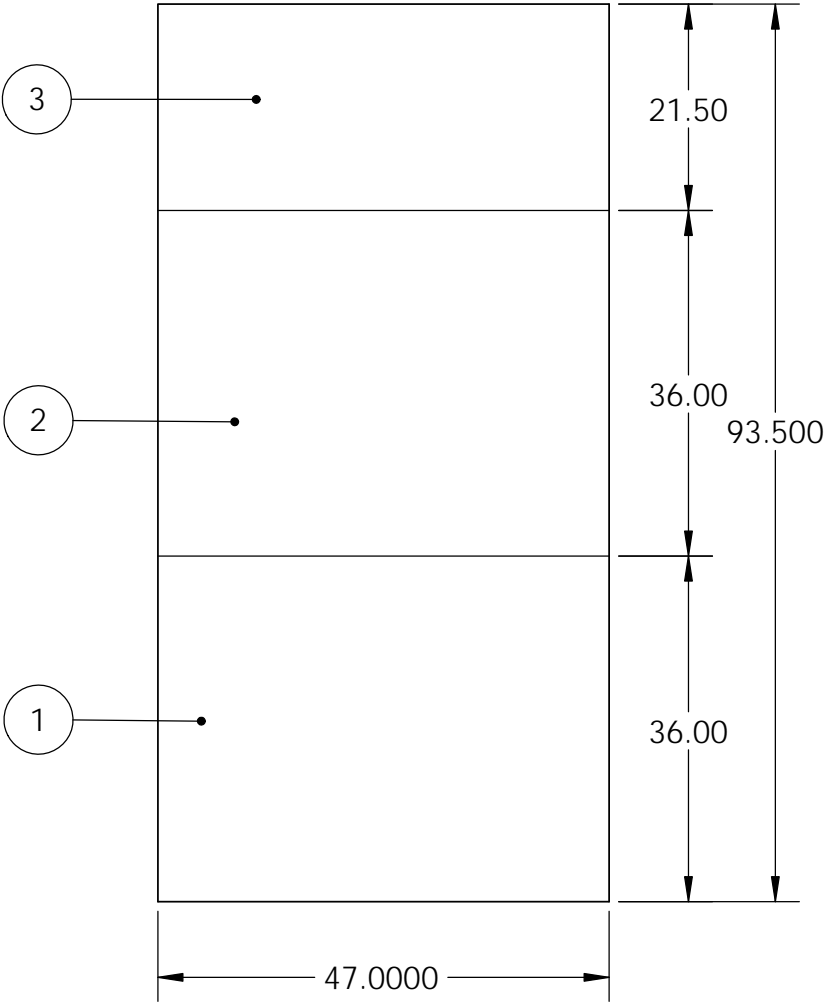


FOR CONSTRUCTION: CUT FIRST TWO BOARDS TO APPLICABLE SIZE. TAKE SPARE SECTION FROM END AND CUT TO SIZE. PLACE THE BOARDS IN CORRECT POSITIONS SHOWN ABOVE AND ATTACH TO APPLICABLE PLYWOOD BACKING.


PROPRIETARY AND CONFIDENTIAL THE INFORMATION CONTAINED IN THIS DRAWING IS THE SOLE PROPERTY OF UNIVERSITY OF IDAHO, ME DEPARTMENT. ANY REPRODUCTION IN PART OR AS A WHOLE WITHOUT THE WRITTEN PERMISSION OF UNIVERSITY OF IDAHO, ME DEPARTMENT IS PROHIBITED.		DIMENSIONS ARE IN INCHES THIRD ANGLE PROJECTION		SOLAR ROCKS	
DEFAULT TOLERANCES: LINEAR: X.±.25 X.X±.1 X.XX±.01 X.XXX±.002		DESCRIPTION: INNER CEMENT INSULATION SIDES CHECKED BY: XXXXXXXXXX DATE: XX/XX/XX DRAWN BY: JAKOB HEMPHILL DATE: 2/25/2019 FILE NAME: (0-00) Full assembly.SLDPR		MATERIAL: CEMENT BOARD	
ANGULAR: X.±.2 X.X±.1 X.XX±.0.30'		UNIVERSITY OF IDAHO ME DEPARTMENT		PART #: 1-02	QTY: 2
		SCALE: 1:20		SHEET: 5 OF 15	

ITEM NO.	PART NUMBER	DESCRIPTION	QTY.
1	001	cement board (3'X5'X1/2")	3

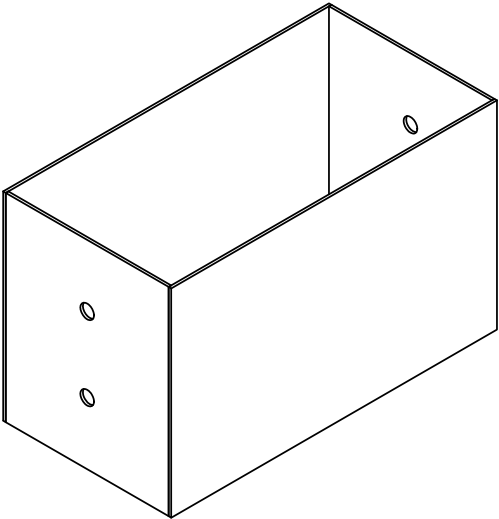
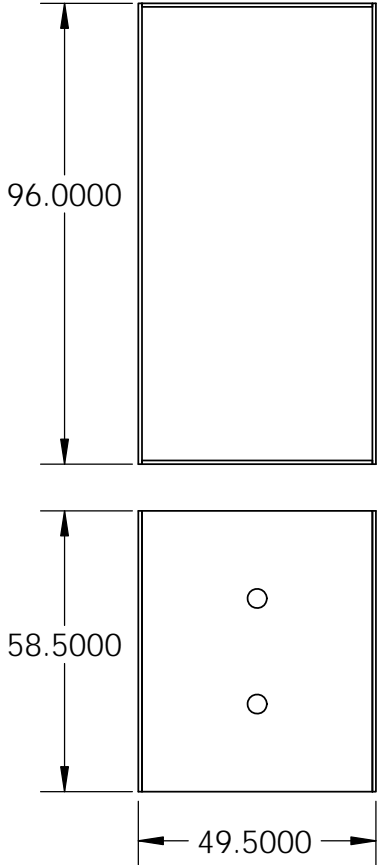
NOTE: BALOONS INDICATE THE BOARDS USED AND THE TOTAL NUMBER OF BOARDS .




FOR CONSTRUCTION: CUT THE THREE BOARDS TO APPLICABLE SIZE. PLACE THE BOARDS IN CORRECT POSITIONS SHOWN ABOVE AND ATTACH TO APPLICABLE PLYWOOD BACKING.

<div>PROPRIETARY AND CONFIDENTIAL</div> <div>THE INFORMATION CONTAINED IN THIS DRAWING IS THE SOLE PROPERTY OF UNIVERSITY OF IDAHO, ME DEPARTMENT. ANY REPRODUCTION IN PART OR AS A WHOLE WITHOUT THE WRITTEN PERMISSION OF UNIVERSITY OF IDAHO, ME DEPARTMENT IS PROHIBITED.</div>		<div>DIMENSIONS ARE IN INCHES</div> <div>THIRD ANGLE PROJECTION</div> <div></div>		<div>SOLAR ROCKS</div>	
		MATERIAL: CEMENT BOARD			
DEFAULT TOLERANCES:		DESCRIPTION: INNER CEMENT INSULATION BOTTOM		<div>UNIVERSITY OF IDAHO</div> <div>ME DEPARTMENT</div>	
LINEAR: X.±.25 X.X±.1 X.XX±.01 X.XXX±.002		ANGULAR: X.±2 X.X±1 X.XX±0.30'			
		CHECKED BY: XXXXXXXXXXXX	DATE: XX/XX/XX		
		DRAWN BY: JAKOB HEMPHILL	DATE: 2/25/2019	PART #: 1-03	QTY: 2
		FILE NAME: (0-00) Full assembly.SLDPRT		SCALE: 1:20	SHEET: 6 OF 15

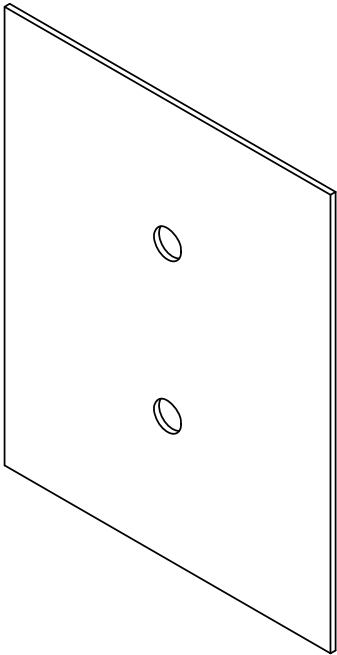
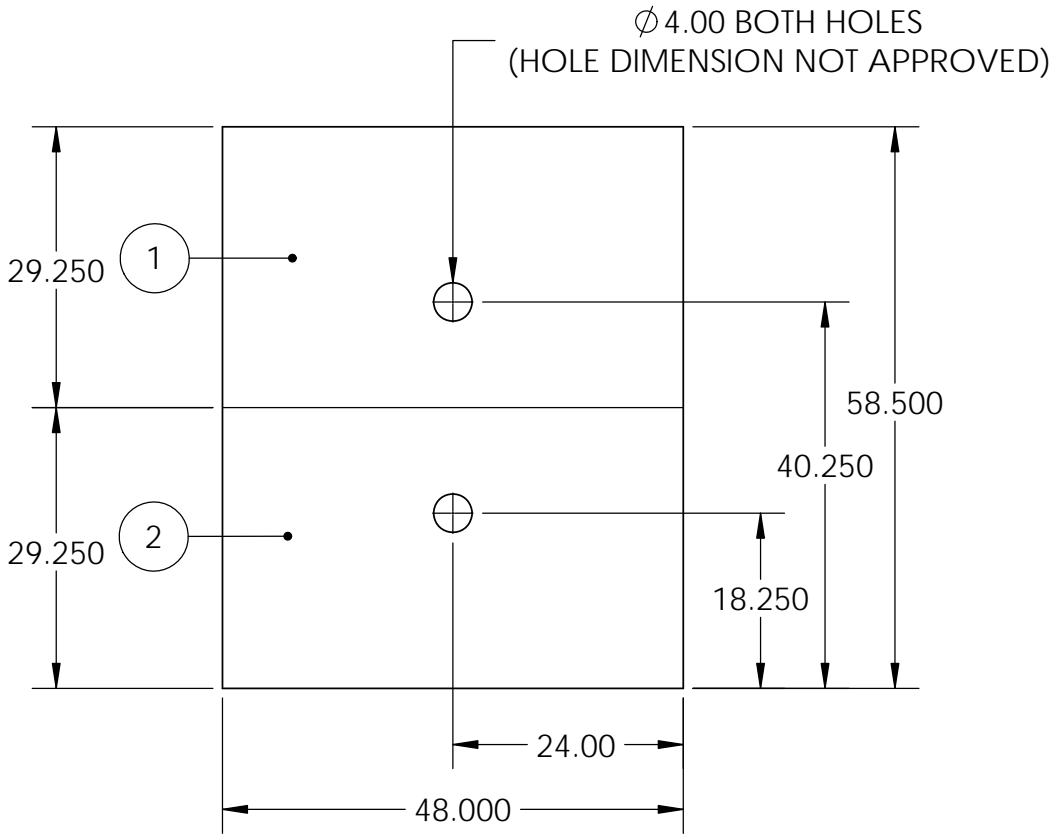
ITEM NO.	PART NUMBER	DESCRIPTION	QTY.
1	2-01	plywood structure ends	2
2	2-02	plywood structure sides	2
3	2-03	plywood structure bottom	1



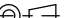
<div>PROPRIETARY AND CONFIDENTIAL</div> <div>THE INFORMATION CONTAINED IN THIS DRAWING IS THE SOLE PROPERTY OF UNIVERSITY OF IDAHO, ME DEPARTMENT. ANY REPRODUCTION IN PART OR AS A WHOLE WITHOUT THE WRITTEN PERMISSION OF UNIVERSITY OF IDAHO, ME DEPARTMENT IS PROHIBITED.</div>		<div>DIMENSIONS ARE IN INCHES</div> <div>THIRD ANGLE PROJECTION</div> <div></div>		<div>SOLAR ROCKS</div>	
MATERIAL: CDX PLYWOOD					
DEFAULT TOLERANCES:		DESCRIPTION: OUTER PLYWOOD STRUCTURE		<div>UNIVERSITY OF IDAHO</div> <div>ME DEPARTMENT</div>	
<div>LINEAR: X. ± .25 X.X ± .1 X.XX ± .01 X.XXX ± .002</div> <div>ANGULAR: X. ± 2 X.X ± 1 X.XX ± 0 30'</div>		CHECKED BY: XXXXXXXXXX	DATE: XX/XX/XX		
		DRAWN BY: JAKOB HEMPHILL	DATE: 2/25/2019	PART #: 2-00	QTY: 1
		FILE NAME: (0-00) Full assembly.SLDPR		SCALE: 1:40	SHEET: 7 OF 15

ITEM NO.	PART NUMBER	DESCRIPTION	QTY.
1	002	CDX plywood sheet (4'X8'X3/8")	1

NOTE: BALOONS INDICATE THE BOARDS USED AND THE TOTAL NUMBER OF BOARDS .

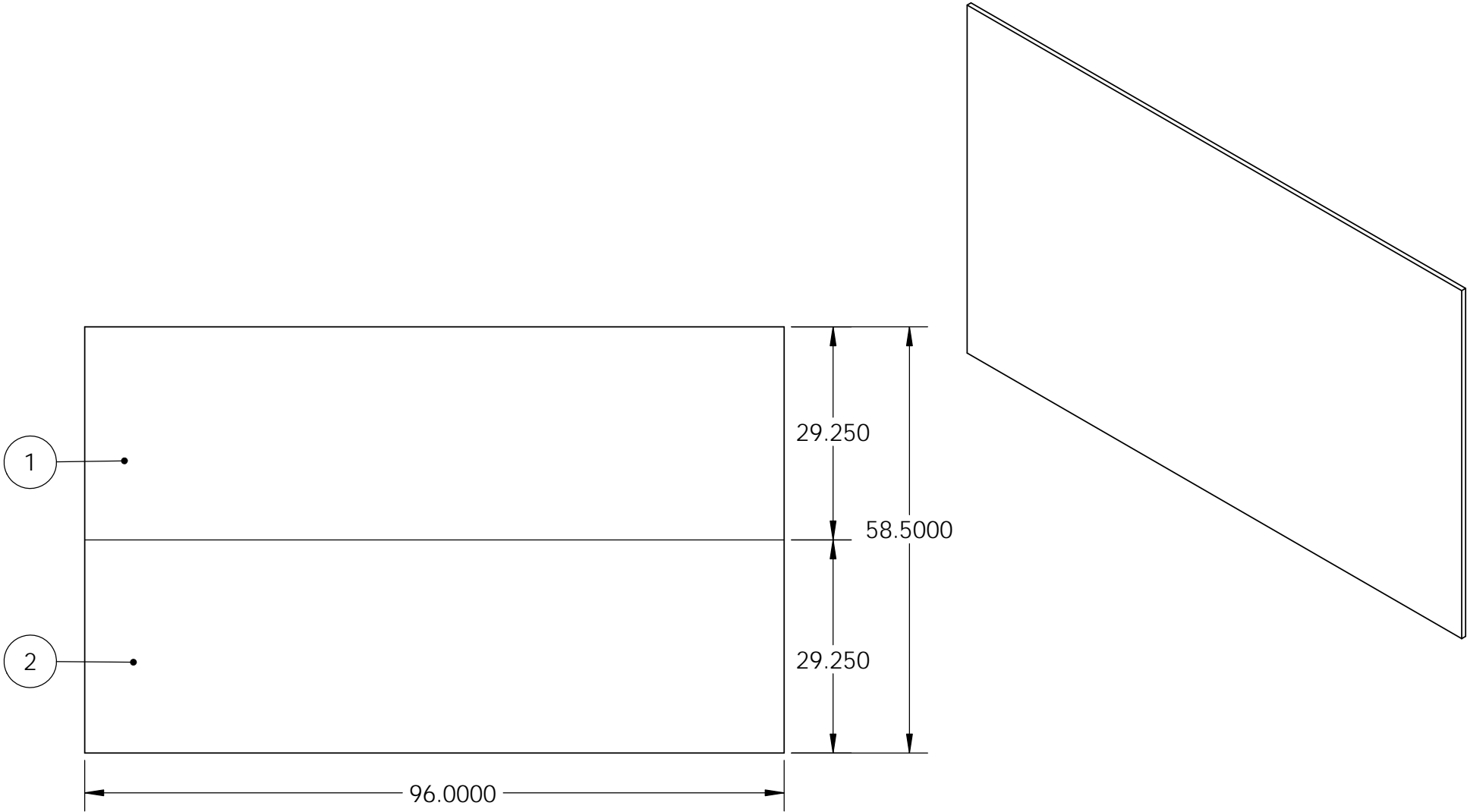


FOR CONSTRUCTION: TAKE ONE PLYWOOD BOARDS, CUT THE 29.25 DIMENSION FIRST THEN, THEN INTO 4 FT LENGTHS. DRILL CENTER HOLES. CUT SO THAT WOOD GRAIN IS ORIENTATED IN A HORIZONTAL FASHION. ATTACH EACH BAORD TO CORRECT LOCATION ON END STRUCTURE


<div>PROPRIETARY AND CONFIDENTIAL</div> <div>THE INFORMATION CONTAINED IN THIS DRAWING IS THE SOLE PROPERTY OF UNIVERSITY OF IDAHO, ME DEPARTMENT. ANY REPRODUCTION IN PART OR AS A WHOLE WITHOUT THE WRITTEN PERMISSION OF UNIVERSITY OF IDAHO, ME DEPARTMENT IS PROHIBITED.</div>		<div>DIMENSIONS ARE IN INCHES</div> <div>THIRD ANGLE PROJECTION</div> <div></div>		<div>SOLAR ROCKS</div>	
		MATERIAL: CDX PLYWOOD			
DEFAULT TOLERANCES:		DESCRIPTION: PLYWOOD SUPPORT STRUCTURE ENDS		<div>UNIVERSITY OF IDAHO</div> <div>ME DEPARTMENT</div>	
LINEAR: X.±.25 X.X±.1 X.XX±.01 X.XXX±.002		ANGULAR: X.±2 X.X±1 X.XX±0.30'			
		CHECKED BY: XXXXXXXXXXXX	DATE: XX/XX/XX		
		DRAWN BY: JAKOB HEMPHILL	DATE: 2/25/2019	PART #: 2-01	QTY: 2
		FILE NAME: (0-00) Full assembly.SLDPRT		SCALE: 1:20	SHEET: 8 OF 15

ITEM NO.	PART NUMBER	DESCRIPTION	QTY.
1	002	CDX plywood sheets (4'X8'X3/8")	2

NOTE: BALOONS INDICATE THE BOARDS USED AND THE TOTAL NUMBER OF BOARDS .

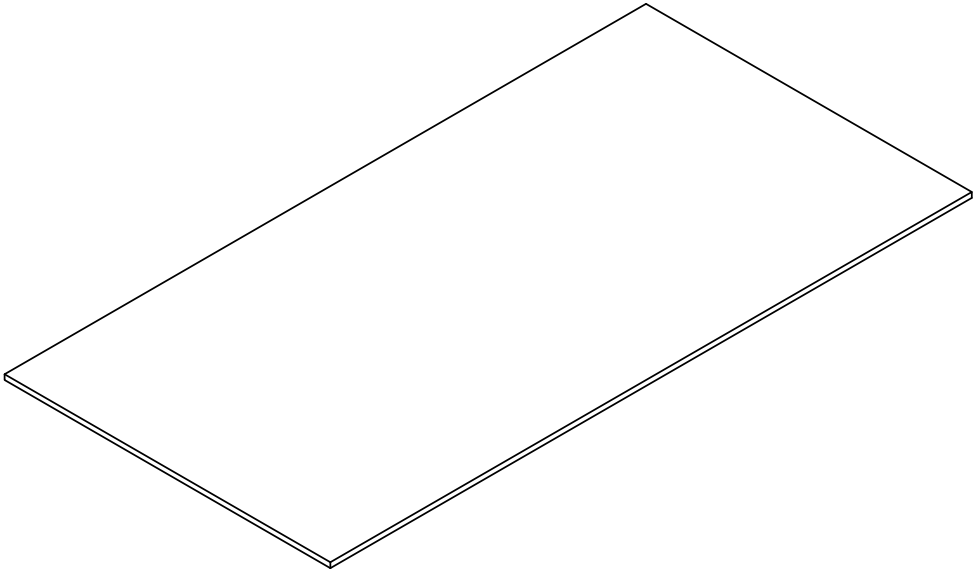
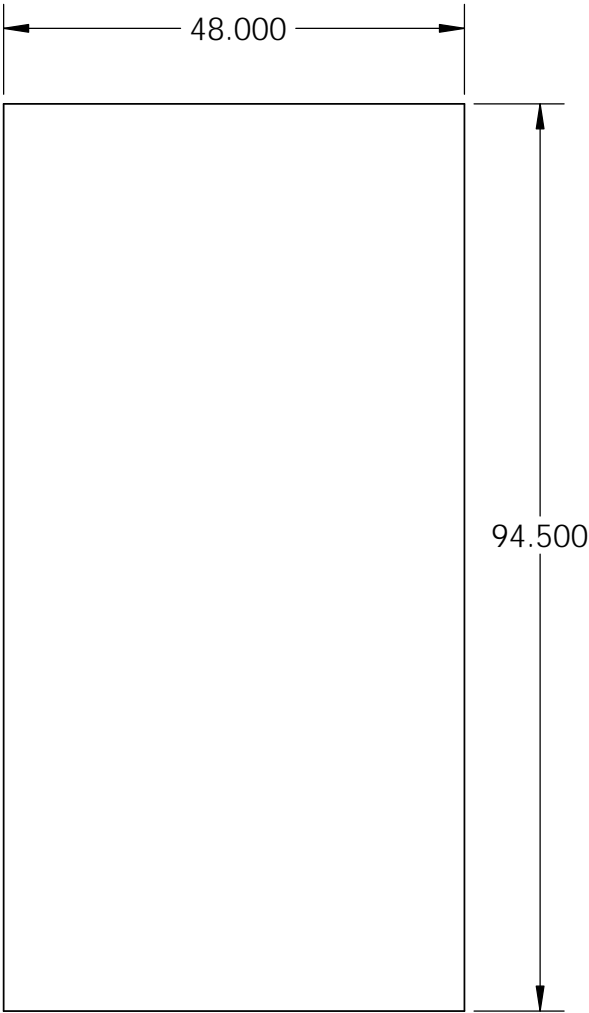


FOR CONSTRUCTION: TAKE TWO PLYWOOD BOARDS, CUT TO SIZE. CUT THE PLYWOOD TO SHAPE SO THAT WOOD GRAIN IS ORIENTATED IN A HORIZONTAL FASHION. ATTACH EACH BAORD TO CORRECT LOCATION ON SIDE STRUCTURE.


<div>PROPRIETARY AND CONFIDENTIAL</div> <div>THE INFORMATION CONTAINED IN THIS DRAWING IS THE SOLE PROPERTY OF UNIVERSITY OF IDAHO, ME DEPARTMENT. ANY REPRODUCTION IN PART OR AS A WHOLE WITHOUT THE WRITTEN PERMISSION OF UNIVERSITY OF IDAHO, ME DEPARTMENT IS PROHIBITED.</div>		<div>DIMENSIONS ARE IN INCHES</div> <div>THIRD ANGLE PROJECTION</div> <div></div>		<div>SOLAR ROCKS</div>	
MATERIAL: CDX PLYWOOD					
DEFAULT TOLERANCES:		DESCRIPTION: PLYWOOD SUPPORT STRUCTURE SIDES		<div>UNIVERSITY OF IDAHO</div> <div>ME DEPARTMENT</div>	
<div>LINEAR:</div> <div>X.±.25</div> <div>X.X±.1</div> <div>X.XX±.01</div> <div>X.XXX±.002</div>	<div>ANGULAR:</div> <div>X.±.2</div> <div>X.X±.1</div> <div>X.XX±.0 30'</div>	<div>CHECKED BY:</div> <div>XXXXXXXXXX</div>	<div>DATE:</div> <div>XX/XX/XX</div>		
<div>DRAWN BY:</div> <div>JAKOB HEMPHILL</div>	<div>DATE:</div> <div>2/25/2019</div>	<div>PART #:</div> <div>2-02</div>	<div>QTY:</div> <div>2</div>		
<div>FILE NAME:</div> <div>(0-00) Full assembly.SLDPRT</div>		<div>SCALE:</div> <div>1:20</div>		<div>SHEET:</div> <div>9 OF 15</div>	

ITEM NO.	PART NUMBER	DESCRIPTION	QTY.
1	002	CDX plywood sheets (4'X8'X3/8")	1

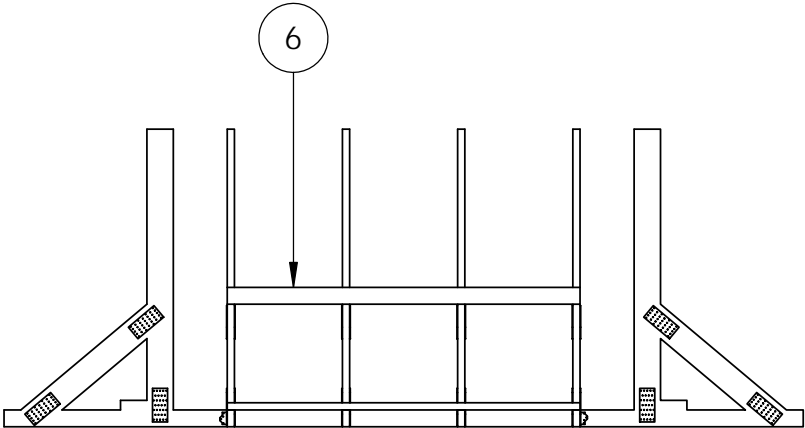
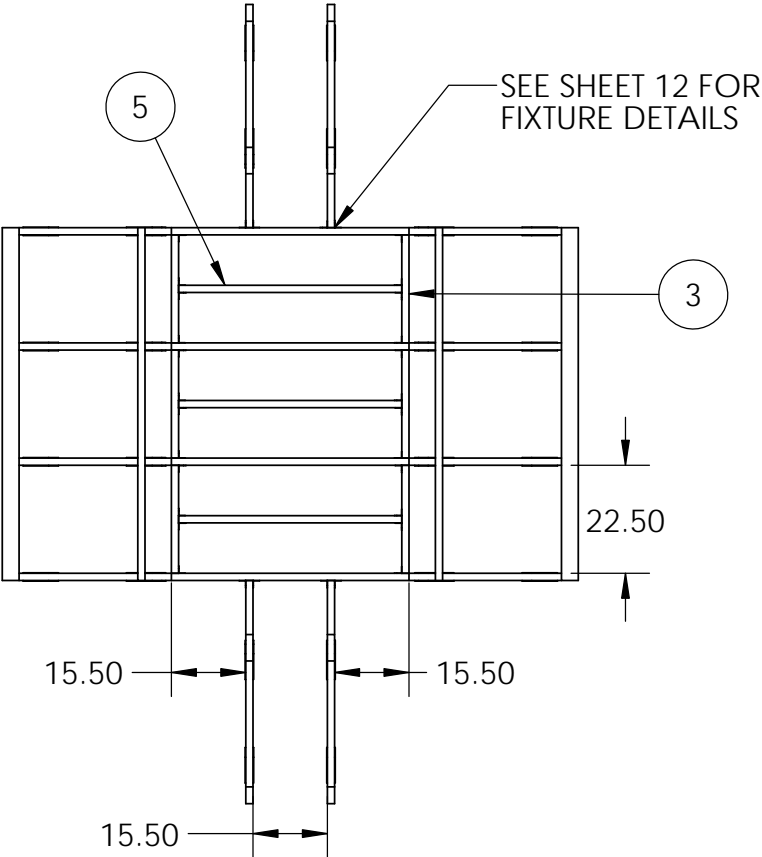
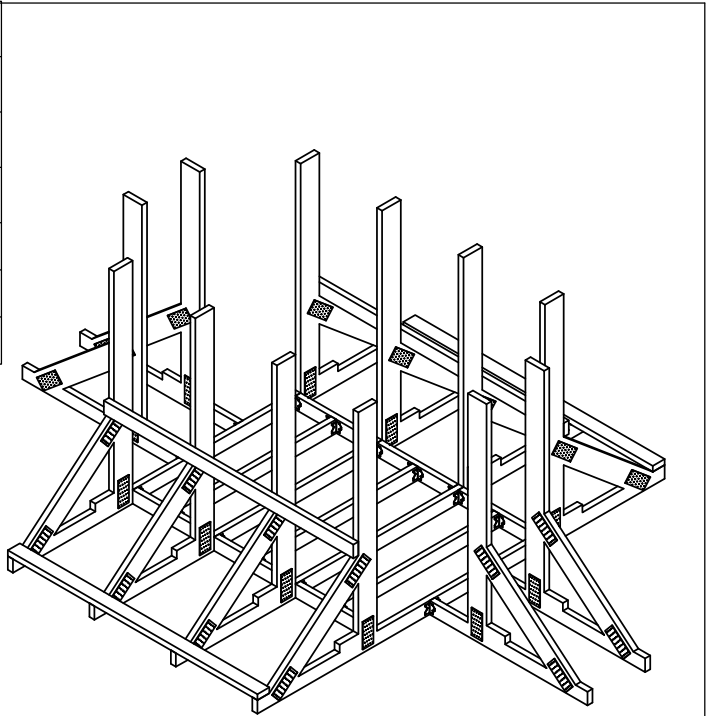
NOTE: BALOONS INDICATE THE BOARDS USED AND THE TOTAL NUMBER OF BOARDS .



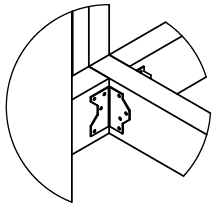
FOR CONSTRUCTION: TAKE TWO PLYWOOD BOARDS, CUT TO SIZE CUT THE PLYWOOD TO SHAPE SO THAT WOOD GRAIN IS ORIENTATED IN A HORIZONTAL FASHION. ATTACH EACH BAORD TO CORRECT LOCATION ON BASE STRUCTURE.

<div>PROPRIETARY AND CONFIDENTIAL</div> <div>THE INFORMATION CONTAINED IN THIS DRAWING IS THE SOLE PROPERTY OF UNIVERSITY OF IDAHO, ME DEPARTMENT. ANY REPRODUCTION IN PART OR AS A WHOLE WITHOUT THE WRITTEN PERMISSION OF UNIVERSITY OF IDAHO, ME DEPARTMENT IS PROHIBITED.</div>		<div>DIMENSIONS ARE IN INCHES</div> <div>THIRD ANGLE PROJECTION</div> <div></div>		<div>SOLAR ROCKS</div>	
		MATERIAL: CDX PLYWOOD			
<div>DEFAULT TOLERANCES:</div> <div><div>LINEAR: X ± .25 X.X ± .1 X.XX ± .01 X.XXX ± .002</div><div>ANGULAR: X ± 2 X.X ± 1 X.XX ± 0.30°</div></div>		<div>DESCRIPTION: PLYWOOD SUPPORT STRUCTURE BASE</div> <div><div>CHECKED BY: XXXXXXXXXXXX</div><div>DATE: XX/XX/XX</div><div>DRAWN BY: JAKOB HEMPHILL</div><div>DATE: 2/25/2019</div><div>FILE NAME: (0-00) Full assembly.SLDPRT</div></div>		<div>UNIVERSITY OF IDAHO</div> <div>ME DEPARTMENT</div> <div><div>PART #: 2-03</div><div>QTY: 2</div></div>	

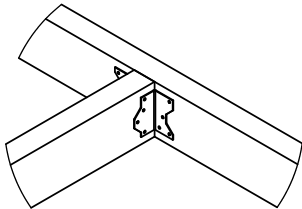
ITEM NO.	PART NUMBER	DESCRIPTION	QTY.
1	3-01	Side support assembly	4
2	3-02	End support assembly	4
3	004	Floor brace support (2"x4"x22.5")	6
4	010	Z-MAX Framing Angle	32
5	004	Floor horizontal Brace (2"x4"x46.50")	3
6	005	Side Horizontal Brace (2"x4"x73.5")	4



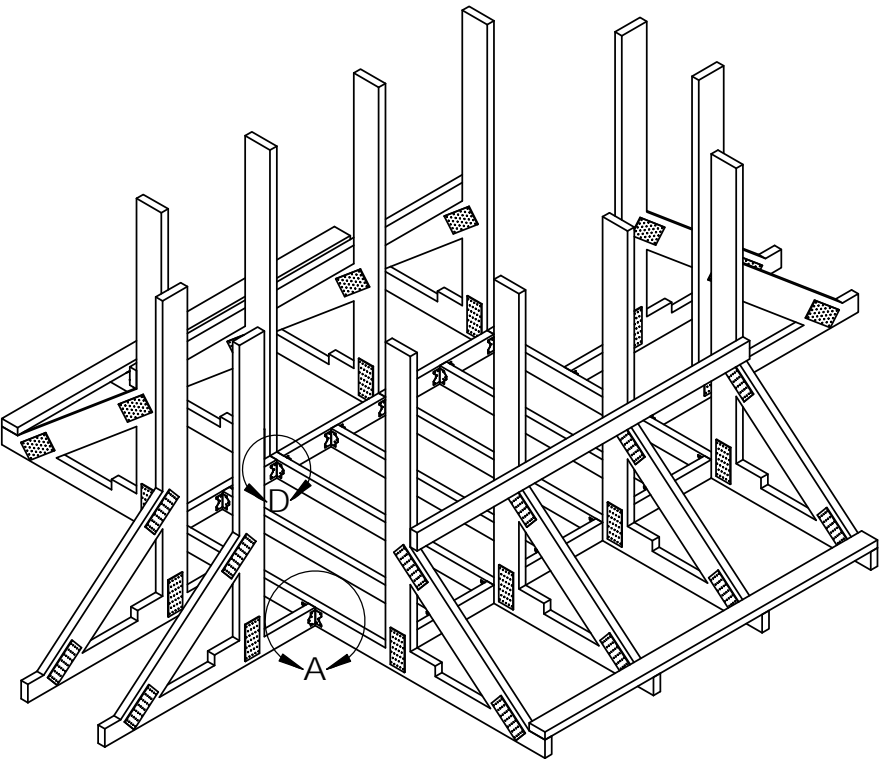
PROPRIETARY AND CONFIDENTIAL THE INFORMATION CONTAINED IN THIS DRAWING IS THE SOLE PROPERTY OF UNIVERSITY OF IDAHO, ME DEPARTMENT. ANY REPRODUCTION IN PART OR AS A WHOLE WITHOUT THE WRITTEN PERMISSION OF UNIVERSITY OF IDAHO, ME DEPARTMENT IS PROHIBITED.		DIMENSIONS ARE IN INCHES THIRD ANGLE PROJECTION		SOLAR ROCKS	
		MATERIAL: VARIES		UNIVERSITY OF IDAHO ME DEPARTMENT	
DEFAULT TOLERANCES: LINEAR: X.±.25 X.X±.1 X.XX±.01 X.XXX±.002		DESCRIPTION: SUPPORT STRUCTURE OVERVIEW CHECKED BY: XXXXXXXXXX DATE: XX/XX/XX DRAWN BY: JAKOB HEMPHILL DATE: 2/25/2019		PART #: 3-00 QTY: 1	
ANGULAR: X.±.2 X.X±.1 X.XX±.0.30'		FILE NAME: (0-00) Full assembly.SLDPRT		SCALE: 1:40 SHEET: 11 OF 15	



DETAIL D
SCALE 1 : 10
TYPICAL OF ALL CONNECTIONS

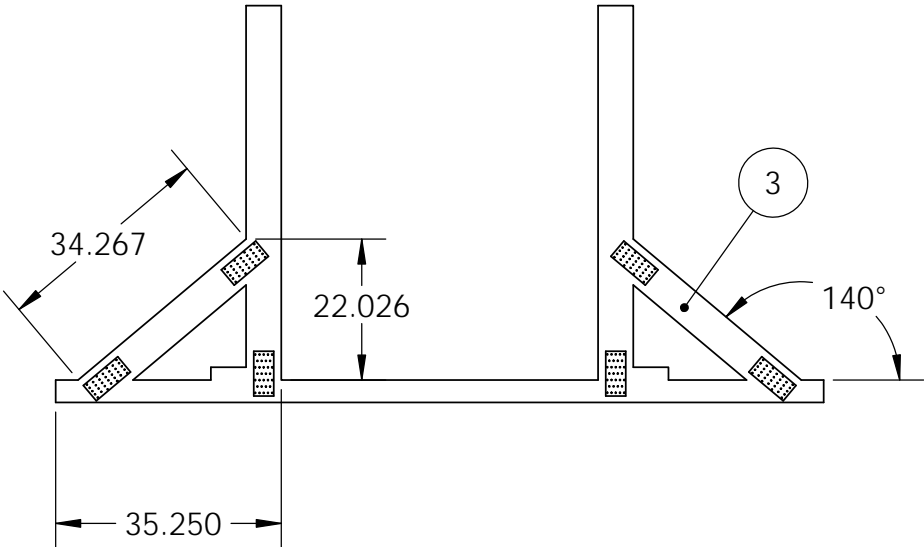
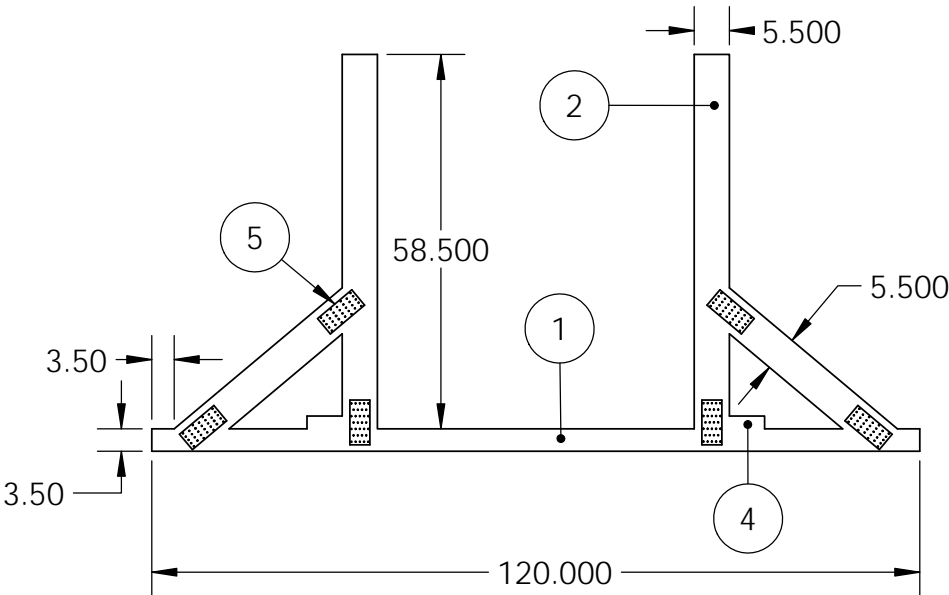
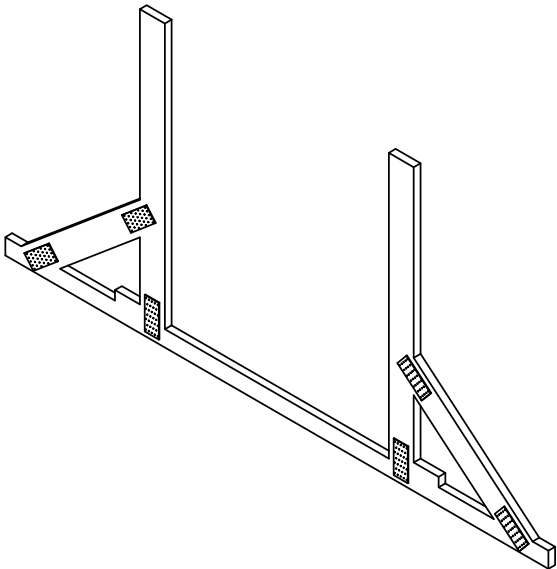


DETAIL A
SCALE 1 : 10
TYPICAL OF ALL CONNECTIONS



PROPRIETARY AND CONFIDENTIAL THE INFORMATION CONTAINED IN THIS DRAWING IS THE SOLE PROPERTY OF UNIVERSITY OF IDAHO, ME DEPARTMENT. ANY REPRODUCTION IN PART OR AS A WHOLE WITHOUT THE WRITTEN PERMISSION OF UNIVERSITY OF IDAHO, ME DEPARTMENT IS PROHIBITED.		DIMENSIONS ARE IN INCHES THIRD ANGLE PROJECTION		SOLAR ROCKS	
		MATERIAL: VARIES		UNIVERSITY OF IDAHO ME DEPARTMENT	
DEFAULT TOLERANCES: LINEAR: X. ± .25 X.X ± .1 X.XX ± .01 X.XXX ± .002		DESCRIPTION: SUB-FLOOR CONNECTIONS		PART #: N/A	
ANGULAR: X. ± 2 X.X ± 1 X.XX ± 0.30'		CHECKED BY: XXXXXXXXXX	DATE: XX/XX/XX	QTY: N/A	
FILE NAME: (0-00) Full assembly.SLDPR		DRAWN BY: JAKOB HEMPHILL	DATE: 2/25/2019	SCALE: 1:30	
				SHEET: 12 OF 15	

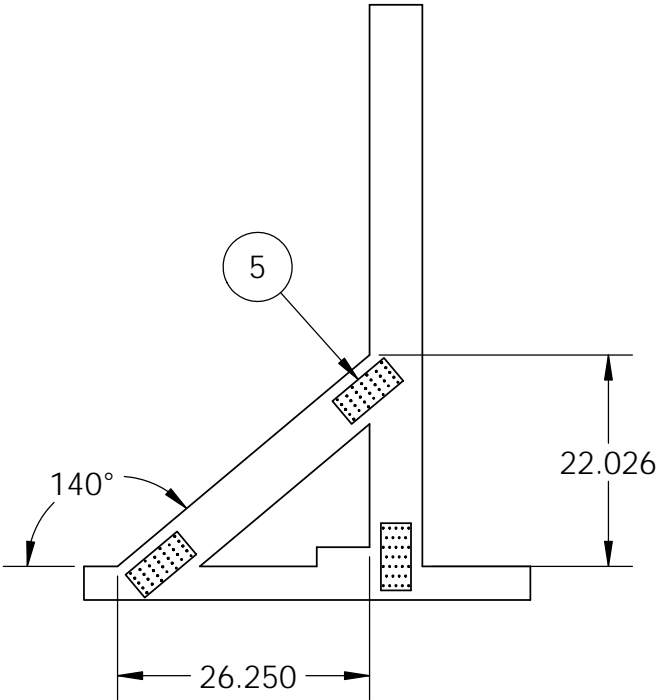
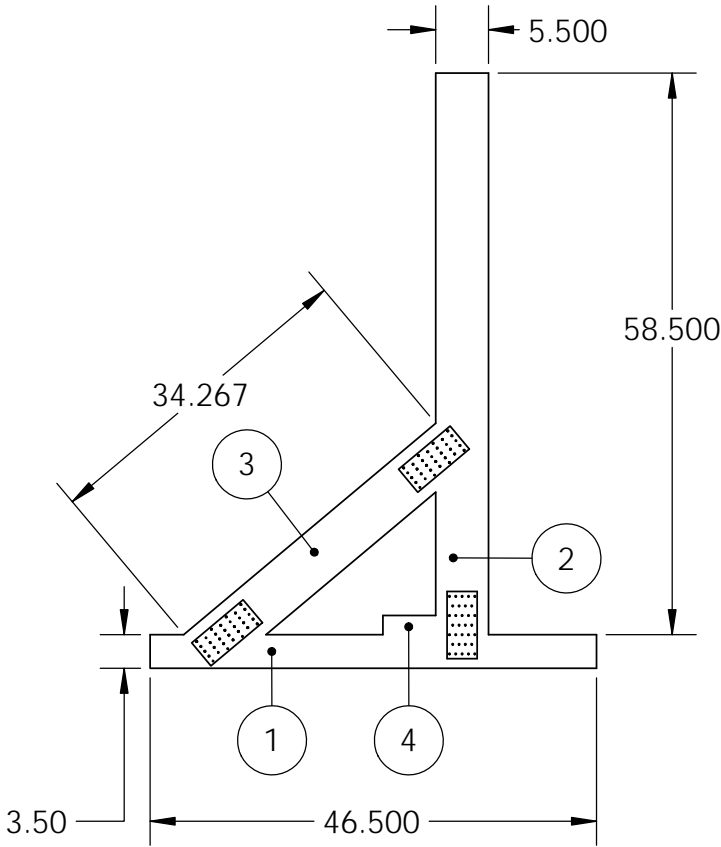
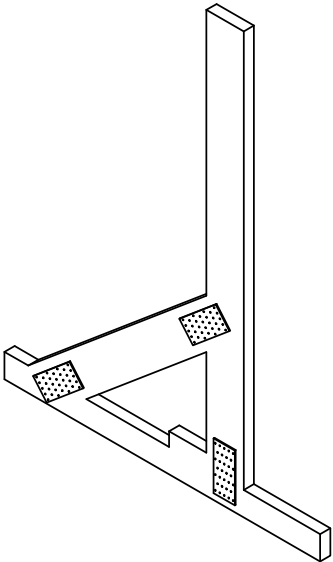
ITEM NO.	PART NUMBER	DESCRIPTION	QTY.
1	003	NO:2 2"X4"X10'	1
2	007	NO:2 2"X6"X58.5"	2
3	006	angled NO:2 2"X6"X38.397"	2
4	005	bracing stubs NO:2 2"X6"X2"	2
5	009	3-1/8"X7" TIE PLATE	12



FOR CONSTRUCTION: BUILD THE SKELETAL FRAMES FIRST. THEY WILL MAKE BUILDING THE CHAMBER INTERIORS EASIER. EACH BOARD IS ATTACHED TO THE BRACE USING THE APPLICABLE FITTINGS.

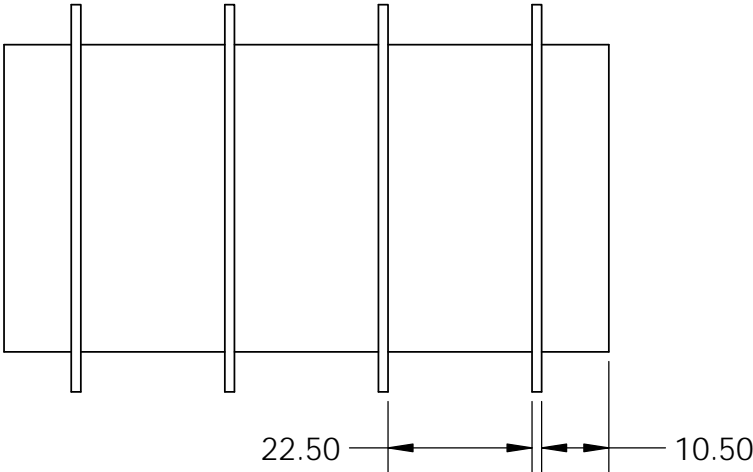
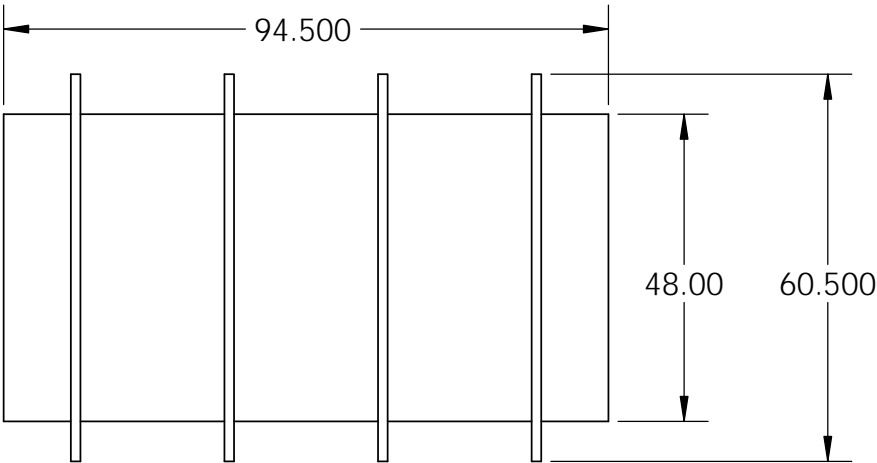
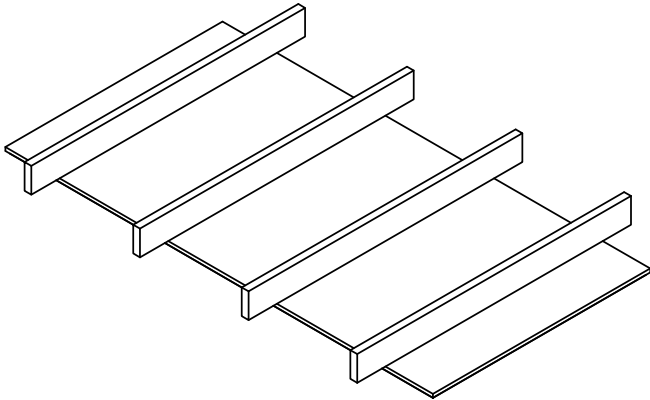
PROPRIETARY AND CONFIDENTIAL THE INFORMATION CONTAINED IN THIS DRAWING IS THE SOLE PROPERTY OF UNIVERSITY OF IDAHO, ME DEPARTMENT. ANY REPRODUCTION IN PART OR AS A WHOLE WITHOUT THE WRITTEN PERMISSION OF UNIVERSITY OF IDAHO, ME DEPARTMENT IS PROHIBITED.		DIMENSIONS ARE IN INCHES THIRD ANGLE PROJECTION		SOLAR ROCKS	
		MATERIAL: NO:2 BOARDS		UNIVERSITY OF IDAHO ME DEPARTMENT	
DEFAULT TOLERANCES: LINEAR: X ± .25 X.X ± .1 X.XX ± .01 X.XXX ± .002		DESCRIPTION: SIDE SUPPORT ASSEMBLY		PART #: 3-00	
ANGULAR: X ± 2 X.X ± 1 X.XX ± 0.30°		CHECKED BY: XXXXXXXXXX	DATE: XX/XX/XX	QTY: 6	
FILE NAME: (0-00) Full assembly.SLDPR		DRAWN BY: JAKOB HEMPHILL	DATE: 2/25/2019	SCALE: 1:30	
				SHEET: 13 OF 15	

ITEM NO.	PART NUMBER	DESCRIPTION	QTY.
1	003	NO:2 2"X4"X53.125"	1
2	007	NO:2 2"X6"X58.500"	1
3	006	angled NO:2 2"X6"X38.320"	1
4	007	bracing stub NO:2 2"X6"X2"	1
5	009	3-1/8"X7" TIE PLATE	6

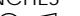


<div>PROPRIETARY AND CONFIDENTIAL</div> <div>THE INFORMATION CONTAINED IN THIS DRAWING IS THE SOLE PROPERTY OF UNIVERSITY OF IDAHO, ME DEPARTMENT. ANY REPRODUCTION IN PART OR AS A WHOLE WITHOUT THE WRITTEN PERMISSION OF UNIVERSITY OF IDAHO, ME DEPARTMENT IS PROHIBITED.</div>		<div>DIMENSIONS ARE IN INCHES</div> <div>THIRD ANGLE PROJECTION</div> <div></div>		<div>SOLAR ROCKS</div>	
		MATERIAL: NO:2 BOARDS			
DEFAULT TOLERANCES:		DESCRIPTION: END SUPPORT ASSEMBLY		UNIVERSITY OF IDAHO ME DEPARTMENT	
LINEAR: X. ± .25 X.X ± .1 X.XX ± .01 X.XXX ± .002	ANGULAR: X. ± 2 X.X ± 1 X.XX ± 0.30°	CHECKED BY: XXXXXXXXXXXX	DATE: XX/XX/XX		
		DRAWN BY: JAKOB HEMPHILL	DATE: 2/25/2019	PART #: 4-00	QTY: 4
		FILE NAME: (0-00) Full assembly.SLDPRT		SCALE: 1:20	SHEET: 14 OF 15

ITEM NO.	PART NUMBER	DESCRIPTION	QTY.
1	001	3'x5'x1/2" cement sheet	1
2	002	4'X8'X3/8" CDX plywood	1
3	007	NO:2 2"X6"X60.5" board	4



FOR CONSTRUCTION: CUT THE CEMENT BOARDS AND PLYWOOD BACKING TO APPLICABLE SIZE. ATTACH BOTH SIMULTANEOUSLY TO 2X6 SUPPORTS. MATCH 2X6 SUPPORT LOCATION TO CORRESPOND WITH THE VERTICAL SUPPORTS OF THE FRAME.

<div>PROPRIETARY AND CONFIDENTIAL</div> <div>THE INFORMATION CONTAINED IN THIS DRAWING IS THE SOLE PROPERTY OF UNIVERSITY OF IDAHO, ME DEPARTMENT. ANY REPRODUCTION IN PART OR AS A WHOLE WITHOUT THE WRITTEN PERMISSION OF UNIVERSITY OF IDAHO, ME DEPARTMENT IS PROHIBITED.</div>		<div>DIMENSIONS ARE IN INCHES</div> <div>THIRD ANGLE PROJECTION</div> <div></div>		<div>SOLAR ROCKS</div>	
MATERIAL: VARIES					
DEFAULT TOLERANCES:		DESCRIPTION: ROOFING ASSEMBLY		<div>UNIVERSITY OF IDAHO</div> <div>ME DEPARTMENT</div>	
<div>LINEAR:</div> <div>X.±.25</div> <div>X.X±.1</div> <div>X.XX±.01</div> <div>X.XXX±.002</div>	<div>ANGULAR:</div> <div>X.±.2</div> <div>X.X±.1</div> <div>X.XX±.0 30'</div>	CHECKED BY: XXXXXXXXXX	DATE: XX/XX/XX		
		DRAWN BY: JAKOB HEMPHILL	DATE: 1/29/2019	PART #: 5-00	QTY: 1
		FILE NAME: (0-00) Full assembly.SLDPRT		SCALE: 1:30	SHEET: 15 OF 15